

SCIENCE OF THE SNOWY SCHEME

with Kirsten Banks

DAMS AND RESERVOIRS

Multiple choice questions

1

What are Kirsten and Ryan walking on?

CIRCLE ANSWER

Train tracks

Khancoban Dam

Landing strip

2

What type of dam is it?

CIRCLE ANSWER

Embankment

Rock fill

Concrete arch

3

How long is the dam?

CIRCLE ANSWER

Nearly 100km long

Nearly 10cm long

Nearly 1km long

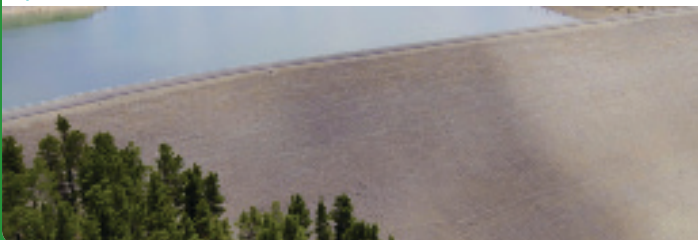


Scan here

Fill in the table below

Dam types of the Snowy Scheme

1) Earth fill dam also known as an embankment dam



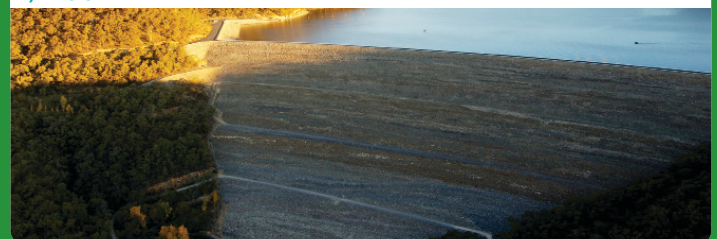
2) Concrete gravity



3) Concrete Arch



4) Rockfill



Dam versus reservoir

Answer the questions

1. What is a dam?

A structure to hold water back

2. What is a reservoir?

It is the water behind the dam

Multiple choice questions

Questions relate to Khancoban Pondage

1

When full, how many gigalitres does it hold?

CIRCLE ANSWER

105 gigalitres

13 gigalitres

33 gigalitres

2

Approximately how many Olympic swimming pools fit in Khancoban Reservoir?

CIRCLE ANSWER

5,000

50,000

500

Understanding water volume in a reservoir

There are two volumes associated with a reservoir.

What are they? Active storage and Gross storage

Explain what they are

Active storage - Water available for releasing down the river, pumping or generating

Gross storage - Total volume of the reservoir

Active and gross storage

Label the diagram using the word bank below

Total active storage | Active storage | Gross storage | Air space | Dam | Reservoir

