

# SCIENCE OF THE SNOWY SCHEME

## with Kirsten Banks

### DAMS AND RESERVOIRS

#### Multiple choice questions

1

What are Kirsten and Ryan walking on?

CIRCLE ANSWER

- Train tracks
- Khancoban Dam
- Landing strip

2

What type of dam is it?

CIRCLE ANSWER

- Embankment
- Rock fill
- Concrete arch

3

How long is the dam?

CIRCLE ANSWER

- Nearly 100km long
- Nearly 10cm long
- Nearly 1km long

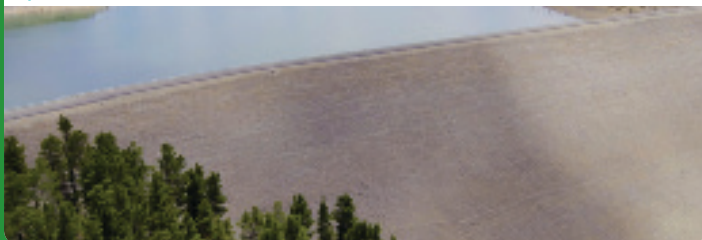


Scan here

Fill in the table below

#### Dam types of the Snowy Scheme

1) Earth fill dam also known as an embankment dam



2)



3)



4)



## Dam versus reservoir

Answer the questions

1. What is a dam?

---

2. What is a reservoir?

---

## Multiple choice questions

Questions relate to Khancoban Pondage

1

When full, how many gigalitres does it hold?

CIRCLE ANSWER

105 gigalitres

13 gigalitres

33 gigalitres

2

Approximately how many olympic swimming pools fit in Khancoban Reservoir?

CIRCLE ANSWER

5,000

50,000

500

## Understanding water volume in a reservoir

There are two volumes associated with a reservoir.

What are they? \_\_\_\_\_ and \_\_\_\_\_

Explain what they are

---

---

---

## Active and gross storage

Label the diagram using the word bank below

Total active storage | Active storage | Gross storage | Air space | Dam | Reservoir

