

Modification of Infrastructure Approval

Section 5.25 of the *Environmental Planning and Assessment Act 1979*

As delegate of the Minister for Planning under the Instrument of Delegation dated 9 March 2022, I approve the modification of the State significant infrastructure approval referred to in Schedule 1, subject to the conditions in Schedule 2



Stephen O'Donoghue
Director
Resource Assessments

Sydney

1st March 2023

SCHEDULE 1

Infrastructure Approval: SSI-12590060 granted by the Minister for Planning and Public Spaces on 16 December 2022

For the following: Hunter Power Project (Kurri Kurri Power Station)

Modification: Modification 1: Laydown areas and construction traffic

SCHEDULE 2

1. In the list of definitions
 - i) Delete "DPIE Water" and replace with "DPE Water"
 - ii) In the definition of "Department", delete ", Industry"
 - iii) In the definition of "Department, delete "DPIE" and replace with "DPE"
 - iv) In the definition of "EIS", after "August 2021", insert: ", and:
 - a) Modification 1 Report, titled '*Environmental Impact Statement – Precinct 3B: Modification*' dated 18 November 2022 and additional information provided by the Proponent to support the modification application and included in Appendix A of the Department's assessment report on Modification 1."
 - v) In the definition of EP&A Regulation, delete "2000" and replace with "2021"

2. In Schedule 2, after Condition A27, insert:

TEMPORARY ADDITIONAL CONSTRUCTION AREA

“A28. Prior to the operation of the development, unless otherwise agreed by the Secretary, the Proponent may utilise the temporary additional construction area identified as Precinct 3B in Figure 2 of Appendix 2 of this approval for construction activities.”

3. In Schedule 2, Condition B40(b), delete “DPIE Water” and replace with “DPE Water”.

4. In Schedule 2, Condition B48 (f)(ii), delete “; and”

5. In Schedule 2, Condition B48 (g), delete “.” and replace with:

“;

(h) include measures to ensure that there are no more than 80 light vehicle movements per hour through the Main Road and Hunter Expressway interchange in the morning and afternoon peak periods respectively during the construction period, including a protocol for the monthly verification of the origin of light vehicle movements in the morning and afternoon peak period; and

(i) describe measures to investigate opportunities to promote the use of shuttle buses and car-pooling during the construction period.”

6. In Appendix 1, add a new row at the end of the table and insert:

Part Lot 3 ¹	DP456769 ¹
-------------------------	-----------------------

7. In Appendix 1, below the table, insert the following:

“Note:

1 The use of this land is subject to Condition A28.”

8. In Appendix 2, below the first figure insert the following:

“Figure 1: General layout of the development

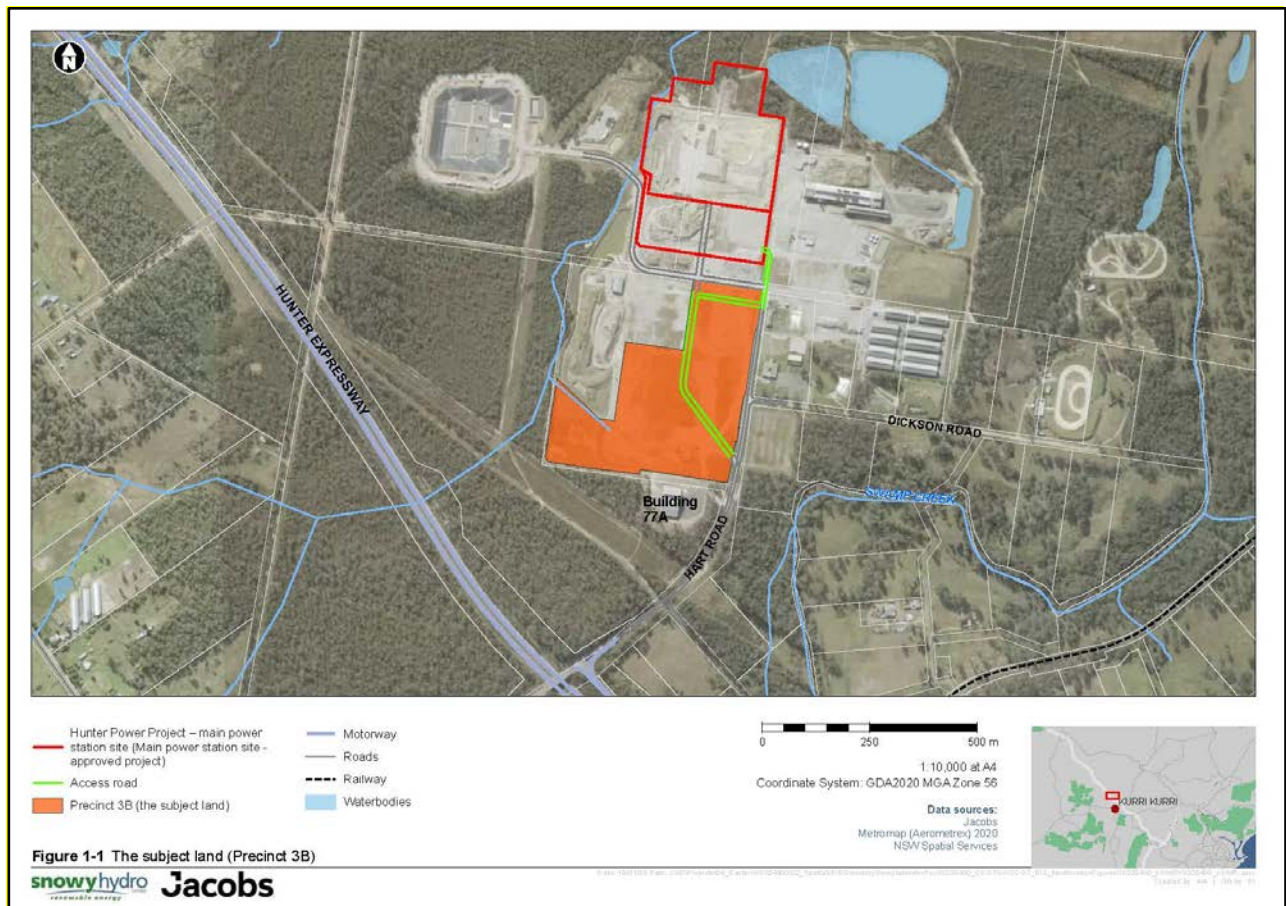


Figure 2: Precinct 3B - Temporary Additional Construction Area”

End of modification
(SSI-12590060)