

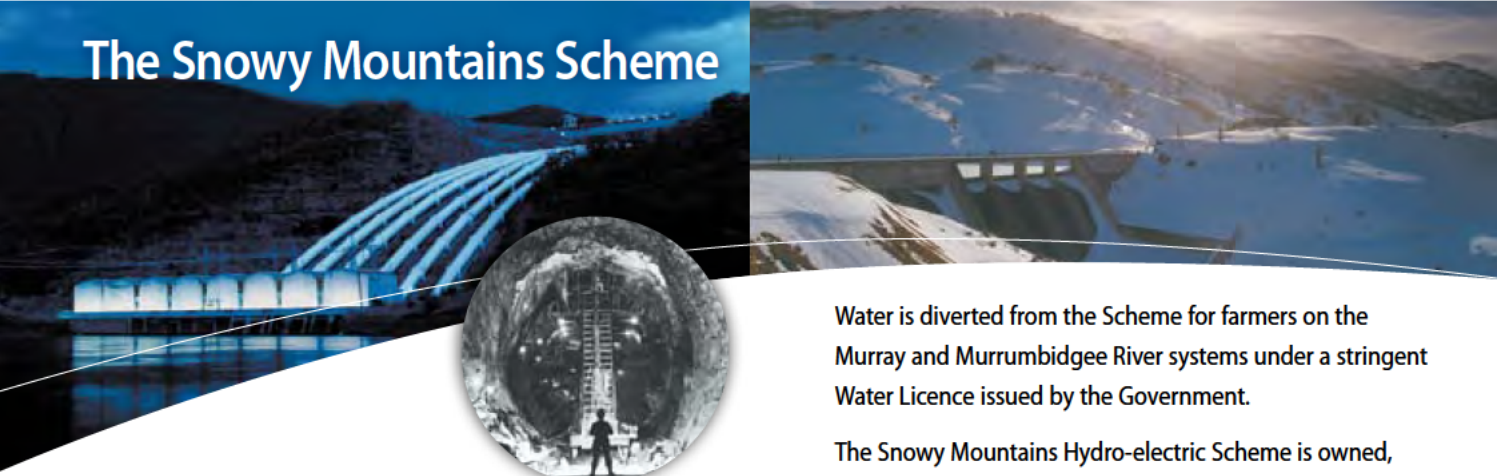
June 2009

your guide to the
**Snowy Mountains
Scheme**



snowyhydro

The Snowy Mountains Scheme



The Snowy Mountains Scheme

The Snowy Mountains Hydro-electric Scheme is an integrated water and hydro-electric power facility located in Australia's southern Alps. The Snowy Scheme has the additional distinction of being one of the most complex, multi-purpose, multi-reservoir hydro schemes ever built.

Recognised as a civil engineering wonder of the modern world, and the greatest engineering project undertaken in Australia, the Scheme is an Australian engineering and social achievement.

Physical works began on the Scheme in 1949 and were completed in 1974. Seven major power stations (two underground), 16 major dams, 80 kilometres of aqueducts, 145 kilometres of tunnels, a large pumping station were completed in all and now the Snowy Scheme has a generating capacity of around 3800 megawatts (MW).

Water is diverted from the Scheme for farmers on the Murray and Murrumbidgee River systems under a stringent Water Licence issued by the Government.

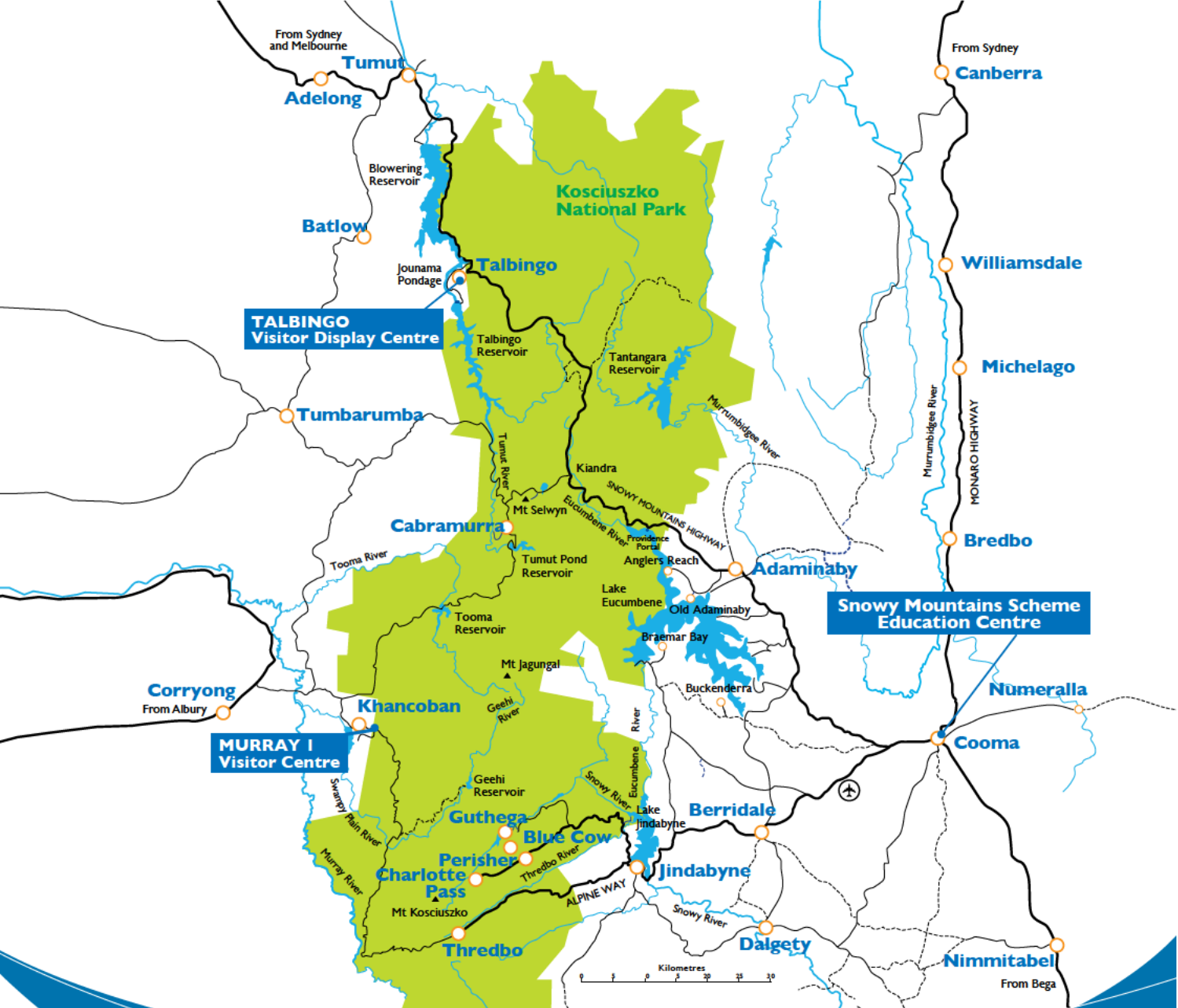
The Snowy Mountains Hydro-electric Scheme is owned, operated and maintained by Snowy Hydro Limited.

Snowy Hydro is the National Electricity Market's third largest generator by capacity. Snowy Hydro provides peak electricity and electricity insurance contracts to the National Electricity Market. The Company's portfolio includes both Snowy Mountains Scheme hydro generation assets, Victorian based gas-fired generation and Red Energy, an electricity retailer operating predominately in Victoria and South Australia.

Snowy Hydro provides a range of facilities around the Snowy Mountains for the public to experience the Snowy Mountains Scheme.



engineering achievement



snowy mountains map



Snowy Mountains Scheme Education Centre

This state-of-the-art visitor facility showcases the amazing history of the Snowy Mountains Scheme; from the early days of construction through to how it is operated by Snowy Hydro today to support Australia's National Electricity Market (NEM). This is a must for any visitor to the Snowy Mountains region.

The Centre houses a comprehensive exhibition hall including an extensive photographic collection, models, hands-on exhibits and interactive displays. You will find information about the Scheme such as engineering, the environment, the NEM, history, water management and power generation. Take your turn on the "power bikes" and see if you can peddle hard enough to power a TV, make some toast or boil a kettle.

You will also find screens displaying the Scheme working in real time. Watch the water levels and movement of water into and from the lakes and reservoirs, as well as which generators are operating, how much electricity they are producing and the prices of electricity in the NEM.

There are two theatres in the Centre which show a variety of short films about the Scheme throughout the day.

Come and talk to our staff and find something amongst our selection of souvenirs, maps, DVDs and books to take home as a memento of your visit.

Visit our coffee shop!

The Snowy Mountains Scheme Education Centre now has a coffee shop serving freshly brewed coffee, tea, cakes and snacks to have in or to take away. Why not sit and enjoy a hot cup of coffee before taking a look around our displays!

Where	Cooma, Monaro Highway, 2kms north of Cooma CBD
Centre Open	7 days, 8am–5pm Monday to Friday, 9am–2pm Saturday, Sunday and public hol's.
Coffee Shop Open	7 days, 9am–4pm Monday to Friday, 9am–1pm Saturday, Sunday and public hol's.
Closed	Christmas Day, New Years Day and Anzac Day.
Cost	Entry is free of charge.

Driver Information...

The centre is located only a couple of minutes from the centre of Cooma and for those travelling south from Canberra we are a little over one hour away. There is ample car parking, disabled access and coach parking.





Murray 1 Visitors Centre

The Murray 1 Power Station and Visitors Centre is located only 15 minutes from Khancoban on the Alpine Way. The Murray 1 Power Station is the second largest power station in the Snowy Mountains Scheme. There are 10 turbines at Murray 1, each capable of producing enough electricity to supply over 95,000 homes.

Offering an exciting and interactive experience, the Murray 1 Visitors Centre has models of generator units and interactive displays.

BBQs and picnic areas by the water are open to the public with light refreshments also available in the Café. Take time to enjoy a coffee while keeping an eye out for the platypus swimming in the pondage.



Inspections of the Murray 1 Power Station are an ideal opportunity to view power station from the viewing gallery. They run for approximately 20 minutes. For safety requirements during inspections see the "Important Information" section of this guide. Coach and school groups are also most welcome.

Only a couple of minutes drive from the centre of Khancoban you will find the release gates for Khancoban Dam, where water from the Scheme is released into the Swampy Plains River and then into the Murray River for irrigation. An impressive location and well worth a look.

Where Alpine Way, 10kms east of Khancoban.

Open Summer - October to April

7 days, 9am – 4pm Monday to Friday,
10am – 4pm Saturday, Sunday and public holidays.
Closed Christmas Day and Anzac Day.
Power Station inspections - 11am and 2pm.

Open Winter - May to September

5 days, 9am – 4pm Monday to Friday,
Open June Long Weekend 10am – 4pm.
Closed winter weekends.
Power Station inspections - 11am and 2pm.

Cost Entry, activities and picnic areas are free of charge

Driver Information...

This power station has designated public visitor parking.

Visitors are asked to follow visitor signage and parking instructions at the power station.

The Alpine way is winding in places. While making your way along one of the most spectacular drives in Australia, motorists are advised to take caution and drive to the weather and road conditions accordingly.

If travelling from Cooma, Jindabyne or Thredbo, please allow sufficient time for your journey, especially during the winter.



Tumut 3 Power Station

Tumut 3 Power Station tours are currently closed due to the largest upgrade and refurbishment of the power station since it's completion in 1974.

This upgrade and maintenance project will involve the replacement of the runner in each generator, a major overhaul of the plant, an upgrade of the electrical controls and protection, repainting and routine maintenance while each turbine generator is out of service.

Heavy transport, cranes and wide items of plant will be moving around the vicinity of the power station, so traffic control measures will be in place. Visitors can still view the power station from the car park area.

For more information on the works visit www.snowyhydro.com.au or call 1800 623 776



Talbingo Visitor Display Centre

For visitors to Talbingo, why not visit the Snowy Mountains Scheme Talbingo Visitors Display Centre, located at the Talbingo Shopping Centre. This display provides information on the Tumut 3 Power Station, the works being undertaken, as well as displays and models of the Snowy Mountains Scheme.

For coach or group tour operators, a tour guide is available in the Talbingo area. Please contact 1800 623 776 for alternative options during your visit to the Snowy Mountains Scheme.

Where Talbingo Shopping Centre, Whitty St, Talbingo
Open 7 days, 8am – 4pm
Cost Entry is free of charge



Driver Information...

Talbingo is a picturesque township located only 40mins from Tumut on the Snowy Mounatins Highway. Surrounded by Kosciusko National Park and State Forests Talbingo offers fishing, waterskiing and boating.

upgrade

Cabramurra



Australia's highest town

At an altitude of 1488m ASL, Cabramurra is Australia's highest township.

Cabramurra is home to a number of Snowy Hydro workers and their families, the public are welcome to visit Cabramurra but no overnight public accommodation is available.

There is a general store located in the main complex housing a Café serving a range of meals and refreshments, a newsagency, fuel sales (prepay at General Store) and souvenirs. The store is open from 7:30am to 5:30pm Monday to Friday and 9am to 4pm Saturday, Sunday and public holidays. The store can be contacted on 02 6454 9520.

In the main complex you will find a beautiful photographic collection. Make sure you also take a drive up to the lookout for one of the best views in Kosciuszko National Park and of the township itself.

Camping



Snowy Scheme Lake foreshores

When visiting the Snowy Scheme lakes and foreshores we ask you to only camp in designated camping areas or caravan parks.

Please help Snowy Hydro maintain the Scheme's unique environment for all by camping in the designated areas which have appropriate facilities and services for the management of rubbish and waste.

Regional maps outline designated areas for camping or you can contact any local tourist information centre (see contact details on page 18) for suggested camping areas and caravan parks.

Or you can contact any of the caravan parks listed below:

Rainbow Pines Tourist Park, Lake Eucumbene	02 6454 2317
Alpine Tourist Park, Adaminaby	02 6454 2438
Fryingpan Caravan Park, Lake Eucumbene	02 6453 7229
Braemar Bay Holiday Park, Lake Eucumbene	02 6456 8805
Providence Holiday Park, Lake Eucumbene	02 6454 2357
Anglers Reach Caravan Park, Lake Eucumbene	02 6454 2223
Buckenderra Holiday Village, Lake Eucumbene	02 6453 7242
Discovery Holiday Park, Lake Jindabyne	02 6456 2099
Jindabyne Holiday Park, Lake Jindabyne	02 6456 2249
Khancoban Lakeside Resort, Khancoban	02 6076 9488
Talbingo Tourist Park, Talbingo	02 6949 5239

enjoy the outdoors

Photos on this page courtesy of
Tourism New South Wales.



Safety around the Scheme

Safety around the Scheme

Snowy Hydro moves water around the Scheme on a daily basis. Power demands in eastern Australia fluctuate daily. As a result, water flows in some rivers can change dramatically, especially for the Snowy above Jindabyne Dam, the Tumut and Swampy Plains Rivers.

Before release



Water levels after only 50 percent release



Some of the changing conditions which can occur in downstream rivers and reservoirs during and after electricity generation are:

- Sudden and rapid changes in water flow and volume in streams and rivers.
- Potential bank collapse during and after high flow events.
- Floating debris.
- Water temperature can be very cold.
- Water level in lake or reservoir may change significantly in a short period of time.



No release



25% release



50% release

These photos above of Jounama Dam releasing into Blowering Reservoir show the magnitude of such releases, even at only 50 percent of the dam release capacity. So always be aware!

When visiting the Snowy Scheme, we ask you to be aware and be safe. Especially in areas near power stations, lake foreshores, release gates and rivers downstream from dams and power stations.

be aware... be safe

Kosciuszko National Park

Almost all the Snowy Mountains Scheme is located within the boundaries of the Kosciuszko National Park. The Park covers more than 690,000 hectares and encompasses Mt Kosciuszko (the highest mountain in Australia at 2228m).

The highest parts of the park are stunning snow country, where the alpine herb-fields have spectacular displays of flowers in summer.

In the west, the dramatic steep fall from the highest peaks extends down through pockets of cool temperate rainforest to drier forests and woodlands of snow gums giving way to tall forests of alpine ash and mountain gum.

Kosciuszko's alpine and sub-alpine areas contain plant species found nowhere else in the world. The park is also home to rare, endangered animal species such as the tiny mountain pygmy possum, corroboree frog and spotted tree frog, whose recovery programs are generously supported through corporate partnership by Snowy Hydro Limited.

Today, visitors to Kosciuszko National Park enjoy the spectacular mountain scenery and a wide range of outdoor experiences. These range from activities around the developed resort areas, visiting the Snowy Mountains Scheme, through self-reliant recreation in the wilderness.

Activities in the Snowy Mountains include:

Car touring, walking, camping, fishing, cycling, snow-sports, guided walks, rafting, canoeing, kayaking and mountaineering adventures. Wakeboarding, waterskiing, sailing, swimming and fishing is also popular on the lakes of Jindabyne, Eucumbene and Talbingo.

For more information call into the following NPWS Visitors Centres:

Snowy Region Visitors Centre,
Kosciuszko Road, Jindabyne Tel 02 6450 5600
Khancoban Information Centre,
Scott St, Khancoban Tel 02 6076 9373
Tumut Region Visitors Centre
Adelong Rd, Tumut Tel 02 6947 7025



stunning scenery



Driver Point-to-Point Distances

Cooma to Power Stations

Murray 1	165km	2hrs 45min
Tumut 3	150km	2hrs

Jindabyne to Power Stations

Jindabyne to Murray 1	105km	1hr 45min
Jindabyne to Tumut 3	176km	2hr 15 min

Khancoban to Power Stations

Murray 1	10km	15min
Tumut 3	149km	2hrs 15min
Cabramurra	64kms	1hr

Tumut to Power Stations

Murray 1	195km	2hr 30min (via Tumbarumba)
Tumut 3	50km	45min

Tumbarumba to Power Stations

Tumbarumba to Murray	187km	1hr 10min
Tumbarumba to Talbingo	108km	1hr 15min (via Tumut)

Important Telephone Numbers

Road Reports	(02) 6456 1553
--------------	----------------

Tourist Information Centres

Cooma	1800 636 525
Corryong	(02) 6076 2277
Jindabyne	(02) 6450 5600
Khancoban	(02) 6076 9373
Tumbarumba	(02) 6948 3444
Tumut	(02) 6947 7025

Important Information

- Covered footwear must be worn i.e. No thongs or open-toed shoes are permitted in power stations.
- No backpacks or large bags are to be taken into power stations.
- We reserve the right to inspect any hand luggage carried on an inspection.
- Children must be supervised at all times.
- Visitors fitted with pacemakers are not permitted on a power station inspection.
- Inspection times may change due to operational or maintenance requirements and may be cancelled without notice (a very rare occurrence).
- Power stations and visitor facilities are under constant video / security surveillance.
- All inspections require visitors to negotiate flights of stairs.
- We apologise that there is limited disabled access. Visitors who may require it are advised to phone ahead to check access arrangements, which can and will be made available where possible.
- Follow the advice and instruction from our guides at all times.
- Ensure you have ample fuel for the journey.
- Pack some warm clothes, even in summer.



enjoy your visit



snowyhydro

www.snowyhydro.com.au
Toll Free 1800 623 776

Snowy
Mountains
Australia's High Country